

IMPACT REPORT 2025

PACIFIC VISION
FOUNDATION





About Us

Pacific Vision Foundation is dedicated to protecting and restoring sight for people in our community. By supporting patient care, surgical access, and resident training, PVF helps ensure more patients receive timely, expert care—regardless of their insurance status or ability to pay.

01 Our Interim CEO and Board Chair



03 A Legacy of Care



04 By the Numbers



05 Patient Stories



07 The Next Generation



09 Faculty Spotlight



11 Resident Research



13 A Longstanding Partnership



15 Our Impact



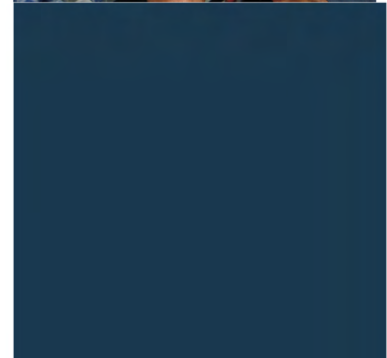
18 Why Give



19 Our Team



20 Our Supporters



A Letter from Our Interim CEO and Board Chair

Dear Friends of Pacific Vision Foundation,

As we reflect on 2025, we are filled with gratitude — for the patients who trusted us with their sight, for the physicians, staff, residents, and community partners who bring our mission to life, and for donors like you who make this work possible.

Vision Restored. Lives Changed.

Pacific Vision Foundation was built on a simple promise: to protect vision and transform lives. That promise comes to life in human ways - in the neighborhood mechanic who thought diminishing eyesight was simply age, but is confident again after cataract surgery; a grandparent with macular degeneration who can read to their grandchildren again; and an artist living with diabetes who is revitalized by timely care. Behind each story is a team committed to the belief that vision is not a privilege, but a sense essential to dignity, independence, and full participation in life.

PVF's investment in 711 Van Ness is central to that promise. This clinical home brings together the people who make sight-saving care possible - ophthalmic surgeons, residents, technical clinic/OR teams, and the adjacent surgery center.

Many who trained with PVF's support are now core faculty teaching the next generation at CPMC, Kaiser, county hospitals, and institutions across our community.

PVF also transforms lives through education. Decades of residents training at CPMC have learned not only the science and surgery of ophthalmology, but the judgment, humility, and lifelong curiosity that define excellent care. At grand rounds, annual research day, and in daily clinical teaching, residents, faculty, and community ophthalmologists discuss the latest advances - from macular degeneration, glaucoma, and cataract surgery to thyroid eye disease and retinal detachments. Seasoned practitioners stay current with state-of-the-art imaging, AI analysis, and emerging technologies; newer physicians gain from the wisdom of experience. Many who trained with PVF's support are now core faculty teaching the next generation at CPMC, Kaiser, county hospitals, and institutions across our community.

Equity at the Center

This work matters especially in an ever-changing healthcare landscape. Shifts in health insurance options leave too many patients without reliable coverage, while new technologies continually reshape what is possible in medicine. PVF meets these changes with steadiness, compassion, and innovation - supporting patients, residents, and faculty as they navigate the future of eye care.

A Foundation Built to Last

In 2025, PVF expanded access through charity care, supported resident education, and strengthened our clinical programs and infrastructure. Looking ahead, we will continue making thoughtful decisions about our care programs, education, building, surgery center, and long-term sustainability so the physicians and care teams supported by PVF can serve for decades to come.

Your partnership makes this possible. Your generosity helps us say yes when a patient cannot afford care and helps train physicians who will protect sight for generations. We enter 2026 with confidence in our team, clarity in our mission, and deep appreciation for every person who has chosen to protect sight and transform lives through Pacific Vision Foundation.

With appreciation,



James Chang,
Interim CEO



Anne Fung, MD
Board Chair



A Legacy of Care, Education, and Leadership



Over the past decade, Pacific Vision Foundation has helped develop an integrated eye care model centered in our building in San Francisco. This collaborative environment brings together the Pacific Vision Surgery Center, the Lions Eye Clinic, the Stein and May Low Vision Rehabilitation Center, and the CPMC Ophthalmology Residency Program.

Together, these programs form a continuum of care that allows patients to move seamlessly from diagnosis to treatment and rehabilitation.



PACIFIC VISION SURGERY CENTER

Provides state-of-the-art surgical care for a wide range of eye conditions.



LIONS EYE CLINIC

Delivers comprehensive eye care to uninsured and underinsured patients, regardless of ability to pay.



STEIN AND MAY LOW VISION REHABILITATION CENTER

Empowers individuals with vision loss to live more independent and fulfilling lives through personalized rehabilitation services.

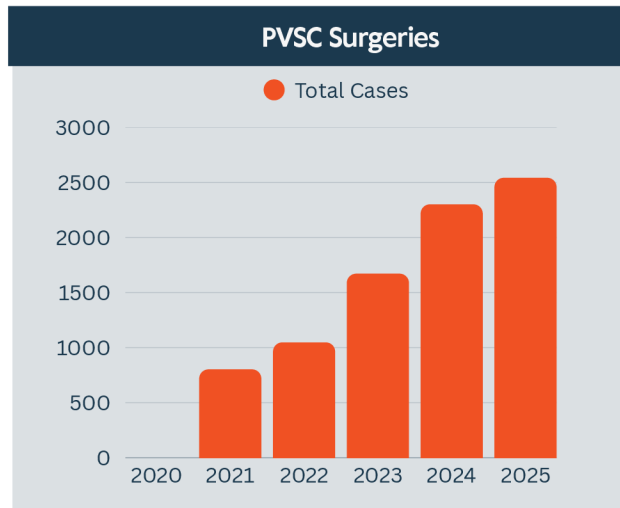


CPMC OPHTHALMOLOGY RESIDENCY

Trains the next generation of ophthalmologists through hands-on, patient-centered education.

Expanding Access to Care

Behind every number is a patient whose sight and quality of life, has been preserved.



570 Total Charity Care Since 2020

2025 marked our highest number of charity cases to date

2,542 surgeries performed

Our charity care is made possible through the Patient Assistance Fund which helps uninsured and underinsured patients receive sight-saving care when they need it most. In 2025, we served our highest number of charitable care cases to date, a clear sign of the rising need in our community. By covering surgery costs, the fund removes financial barriers, protects vision, and helps patients preserve their independence and quality of life.

Patient Assistance Fund

60% Working Age



Protecting vision during key working years.

76% California

Expanding access across state lines.

24% Nevada

13 California Counties



Reaching patients across the region.

Restoring Sight, Changing Lives

Jim's Story: Acting Quickly to Save Sight

Jim never imagined that a brief flash of light in his right eye could signal the start of a vision emergency. Weeks later, while working seasonally more than 100 miles from home, a dark shadow began creeping into his peripheral vision. That's when he knew something was wrong.

Back in the Bay Area, Jim was diagnosed with a large retinal tear and detachment, an urgent condition that can lead to permanent vision loss without immediate surgery. Recently laid off and without insurance, he feared the worst.



“You all saved me from further vision loss with compassion and excellence.”

Through a fast referral and coordinated care, Jim underwent complex retinal surgery with Dr. Gaurav Shah and Dr. Andrew Lin at the Pacific Vision Surgery Center. Their reassurance helped put him at ease during a frightening moment.

Months later, when a cataract developed as a complication of the retinal repair, fourth-year CPMC ophthalmology resident Dr. Samantha Butterfield performed cataract surgery, and Jim continued follow-up care with the clinical team.

Reflecting on his experience, Jim shared: “I had complete confidence in every step of my care.”

Jim's experience is a powerful reminder of the life-changing impact of accessible, high-quality vision care—and of the network of physicians, residents, clinical teams, and donors who make that care possible. By bringing together these partners, PVF serves as a bridge between philanthropy and patient care, helping expand access to sight-saving treatment throughout our community.

Raúl's Story: Seeing Life Clearly Again

When Raúl first came to the Lions Eye Clinic, he had been living with cataracts for nearly seven years. Over time, everyday activities became increasingly difficult. Driving at night felt like the road was “swallowing” him. At work in auto body repair, he worried about safely pulling cars into the shop. Even during Bible study, he struggled to clearly see the friend sitting beside him without turning his entire head to check that they were still there.

“I kept blaming it on age,” he said. “But it wasn’t age. It was my vision.”

For years, Raúl and his wife, Gabby, searched for help. Without insurance, cataract surgery would have cost at least \$3,500 per eye where they lived in Nevada, an impossible expense for their family. Gabby spent hours researching online, determined to find a place that could help.

“Everyone here genuinely cares. The attention to detail, the patience — if that’s not love, what is? You feel the passion for the work.”

Her persistence eventually led them to Pacific Vision Foundation. Through the generosity of donors, Raúl received cataract surgery at no cost to him or his family. The difference was immediate—faces clearer, colors brighter, and everyday life once again in full view.

Raúl’s care was made possible through the collaborative model that brings together physicians, residents, and clinical teams dedicated to expanding access to sight-restoring treatment.

Today, Raúl is back to the routines that once felt uncertain—from working in the shop to sharing quiet moments with family and friends—now seeing the world clearly again.



Raúl (right) with his wife Gabby and resident Dr. Kayne McCarthy

Training the Next Generation of Ophthalmologists

The CPMC Ophthalmology Residency Program is a cornerstone of Pacific Vision Foundation's mission. Through hands-on surgical training, close mentorship with faculty, and exposure to complex cases, residents develop the expertise they will carry into communities across the country.



Dr. Neeraj Chawla
Year 4

Dr. Neeraj Chawla was drawn to ophthalmology for its blend of diagnosis, procedure, and surgery—and the chance to restore sight. At CPMC, strong mentorship and meaningful patient experiences deepened his commitment to compassionate care, including one memorable cataract surgery that allowed an 89-year-old patient to see her grandchildren again. After residency, he will pursue a glaucoma fellowship at The Sue Anschutz-Rodgers Eye Center at the University of Colorado.



Dr. Sumner Lawson
Year 2

Dr. Sumner Lawson's path to ophthalmology has been shaped by curiosity, compassion, and a commitment to health equity. Drawn to the field's elegant surgeries and immediate impact on patients' lives, she is especially interested in pediatric ophthalmology, inspired by mentors such as Dr. Michelle Cabrera. Her global perspective was also shaped by four months spent sailing around the world before medical school, reinforcing her belief in ophthalmology's lasting impact beyond borders.

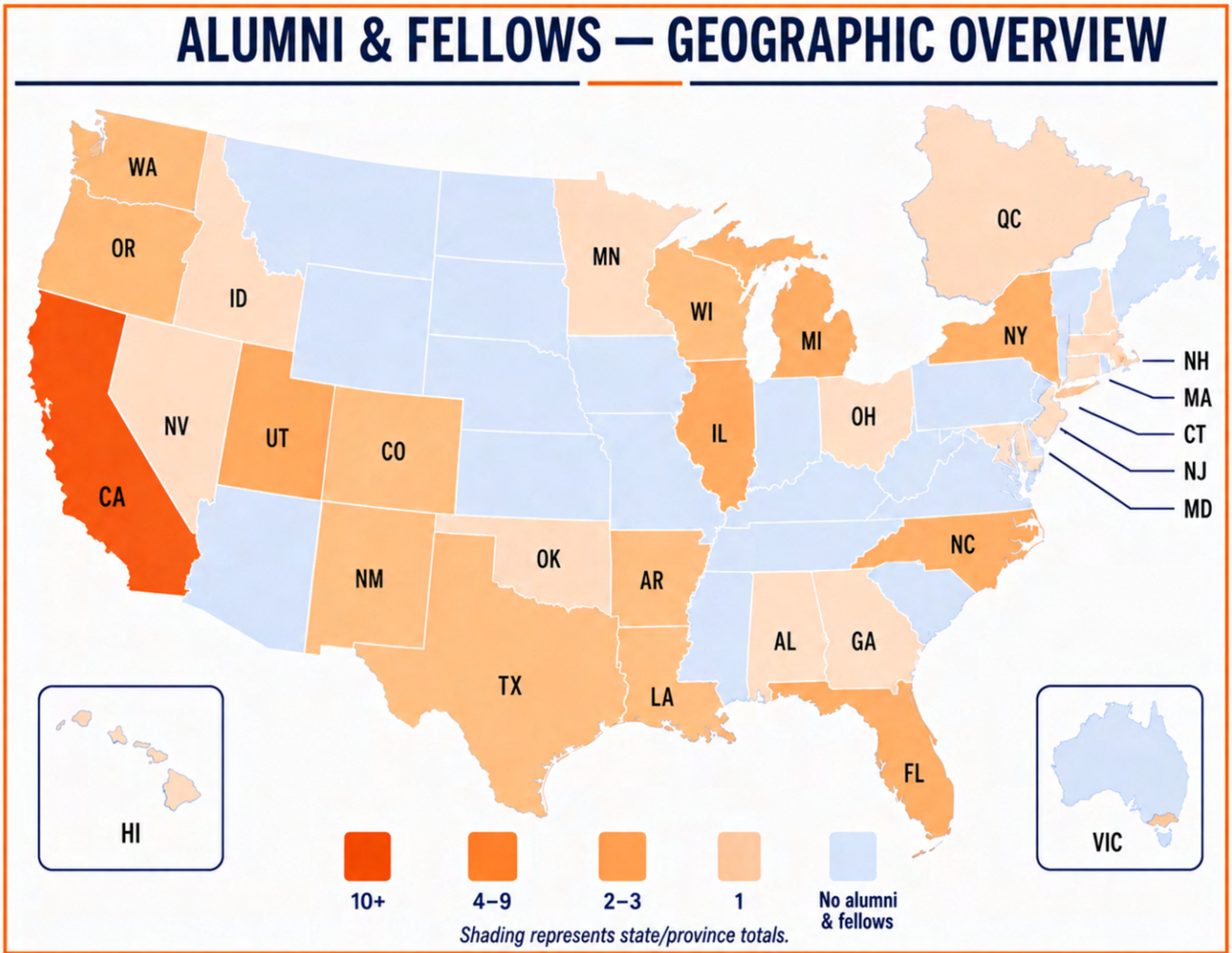


Dr. Rebecca Lin
Year 2

Dr. Rebecca Lin's interest in ophthalmology began with her own experience as a longtime orthokeratology patient and grew during medical school, where observing cataract surgery confirmed her path. At CPMC, she has valued strong mentorship, hands-on learning, and the chance to care for patients from diverse backgrounds, using her Mandarin and Spanish skills to build trust and connection. Currently interested in cornea, she hopes to include teaching, mentorship, and global health in her future career.

A Network of Vision Leaders

ALUMNI & FELLOWS — GEOGRAPHIC OVERVIEW



Where CPMC Ophthalmology residents and retina fellow alumni are practicing worldwide today

Residency Fast Facts



9

Residents Trained Annually



< 1%

Acceptance Rate

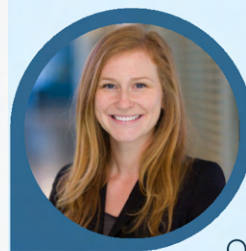


200+

Alumni

2025 Graduating Residents

Post-Residency Fellowship Placements



DR. SAMANTHA BUTTERFIELD

Pediatric Ophthalmology and Adult Strabismus Ophthalmology Fellow, Department of Ophthalmology at the University of Colorado School of Medicine



DR. SHANE GRIFFIN

Vitreoretinal Surgery Fellow Shiley Eye Institute at UC San Diego

2025

Expert clinicians. Dedicated educators.
Mentors shaping the next generation of
ophthalmology.

Faculty Spotlight

PVF supports the CPMC Ophthalmology faculty: dedicated clinicians, educators, and mentors advancing patient care and training the next generation of eye physicians.



Gaurav Shah, MD
Interim Chair



J. Michael Jumper, MD
Vice Chair



Kevin Denny, MD
Emeritus Chair



Samuel Reiter, MD
Residency Program
Director



Kristina Austin, MD
Associate Program Director



Louisa Lu, MD
Director of Medical
Student Education



Anita Agarwal, MD
Uvetis Chief



Jason Bacharach, MD
Glaucoma Co-Chief



Andrew Calman, MD, PhD
Faculty Development
Chair

“The faculty members are incredibly dedicated, supportive, and approachable. They foster a collaborative environment, making tackling complex cases an excellent learning experience.” Kayne McCarthy, MD, Resident

2025

Our faculty pass forward more than knowledge: they model judgment, compassion, and care.



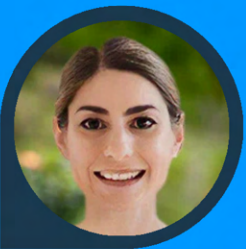
Judy Chen, MD
Retina Chief



Gena Demento, MD
Global Ophthalmology
Chief



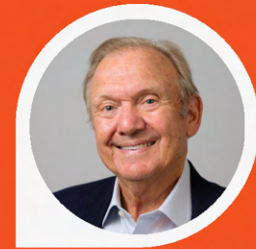
Matthew Denny, MD
Cataract/Anterior
Segment Chief



Georgia Kamboj, MD
Research Chief



Anne Kutzscher, MD
Associate Program Co-
Director/Lion's Club



Bernd Kutzscher, MD
Comprehensive Chief



Mark Mandel, MD
Cornea Chief



Azam Qureshi, MD
Pediatrics Chief



Jasdeep Sabharwal, MD
Glaucoma Co-Chief



Rona Z. Silkiss, MD, FACS
Oculoplastics Chief



Andrew L. Sorenson, MD
Refractive Surgery Chief

Behind every resident is a network of dedicated faculty mentors. Through its partnership with CPMC, Pacific Vision Foundation supports the volunteer faculty and training resources that help make the residency program one of the country's premier ophthalmic training programs.

“For me, it is an honor and a privilege to teach. I get more from interacting with the resident surgeons than I could ever give back. They are amazing, inquisitive individuals.” – Dr. Jason Bacharach



Advancing Care Through Research and Innovation

Through clinical trials, high-impact scholarly publications, and national and international presentations, the CPMC Department of Ophthalmology is advancing the future of ophthalmology while expanding access to care today. Pacific Vision Foundation is proud to support these efforts, ensuring that patients receive cutting-edge treatment – and that the next generation of physicians is equipped to deliver it.

Resident Research Highlights for 2025

Alternate Pathways to Pediatric Ophthalmology Perspectives from Pediatric Ophthalmology and Strabismus Educators

*Samantha Butterfield, MD, with support from Susan Day, MD;
Azam Qureshi, MD; and Susan Culican, MD, PhD*

Dr. Samantha Butterfield’s research addresses the growing national shortage of pediatric ophthalmologists by exploring innovative training pathways to strengthen the workforce. Through a national survey of 123 educators and program leaders, it was found that 73% of institutions are struggling to recruit trainees, while 79% believe alternative training models could help address the gap. Her work highlights both the urgency of expanding access to pediatric eye care and the field’s openness to new approaches, while also identifying key challenges such as maintaining training quality and addressing systemic barriers.

Analysis of Educational Materials at the Lions Eye Clinic: A Quality Improvement Study

Matt McHarg, MD, with support from Andrew Calman, MD and Louisa Lu, MD

Dr. Matt McHarg’s quality improvement study at the Lions Eye Clinic highlights a critical gap in patient understanding. Surveying new patients, his research found that 59% did not know why they were referred and reported low baseline understanding of their condition, while educational brochures significantly improved comprehension and were highly valued by patients. By identifying missed opportunities for early, accessible education, his work is informing new approaches to deliver patient-friendly materials to reduce anxiety, improve health literacy, and ultimately strengthen patient outcomes.

Virtual Reality Perimetry in Moderate and Severe Glaucoma

Neeraj Chawla, MD, with support from Jason Bacharach, MD
and Jasdeep Sabharwal, MD PhD

Dr. Neeraj Chawla's research explores the use of virtual reality (VR) technology to improve visual field testing for patients with moderate to severe glaucoma, an essential but often uncomfortable and unreliable component of care. His study found that VR-based testing produced results comparable to the current gold standard while dramatically improving the patient experience, with 100% of participants preferring the VR method for future testing. By demonstrating the potential for more accessible, comfortable, and engaging diagnostic tools, this work highlights how emerging technologies can enhance care delivery.



13 clinical trials



38 research publications



41 presentations



Characterizing Risk Factors for Dislocated IOLs after Cataract Surgery

Mark Oet, MD with support from Georgia Kamboj, MBBS PhD and Matthew Denny, MD

Dr. Mark Oet's research investigates the growing risk of intraocular lens (IOL) dislocation following cataract surgery, a complication that can lead to significant vision impairment and additional procedures. Through a case-control study, he identified key risk factors, including pseudoexfoliation and prior eye trauma, and demonstrated that risk increases when multiple factors are present. His work contributes to a deeper understanding of long-term surgical outcomes and lays the groundwork for future tools, such as risk calculators, to help clinicians better predict, prevent, and manage complications as more patients undergo cataract surgery earlier in life.

Pixel to Prognosis: Can Large Language Models Diagnose Retinal Pathology?

Kayne McCarthy, MD with support from Robin Vora, MD and Tayyeba Ali, MD

Dr. Kayne McCarthy's research explores the potential of artificial intelligence to assist in diagnosing complex retinal diseases. Evaluating leading large language models using 69 real-world patient cases with multimodal imaging, his study found that while AI can effectively interpret images and generate diagnostic possibilities, it still falls short in synthesizing full clinical context to reach accurate final diagnoses. This work highlights both the promise and current limitations of AI in ophthalmology, helping to inform how emerging technologies can be responsibly integrated to support, rather than replace, clinical decision-making.

A Longstanding Partnership in Care

Collaboration with the Lions Foundation of Northern California–Nevada



For more than 65 years, Pacific Vision Foundation has worked alongside the Lions Foundation of Northern California–Nevada to expand access to high-quality eye care for patients across the region. This enduring partnership reflects a shared commitment to ensuring that financial barriers never stand in the way of sight-saving treatment.

Patients who are uninsured or underinsured are connected to care through the CPMC Lions Eye Clinic, where they receive comprehensive evaluation, treatment, and follow-up services.

Many are referred through a network of Lions Clubs across Northern California and Nevada, often traveling long distances to access specialized care not available in their local communities.

This partnership is a critical part of a broader continuum of care: one that brings together community-based referrals, clinical expertise, surgical services, and rehabilitation.



In addition to supporting patient access, the Lions Foundation has played an important role in strengthening the infrastructure that makes this care possible, from equipping clinic spaces to investing in education and training environments. Together, these contributions help create a setting where patients receive care and future ophthalmologists are trained side by side.

Turning Compassion into Action



One Lion's Impact

Steve Laden, a longtime Lions Club member in Reno, Nevada, has played a critical role in connecting patients in his community to sight-saving care. Lions Club members are part of Lions Clubs International, a global network of volunteers dedicated to community service, including improving access to vision care.

In the wake of COVID-19, when travel for medical care became increasingly difficult, Steve began working directly with local clinics to identify patients in need.

Steve helped remove barriers to care by coordinating transportation for patients traveling to San Francisco, ensuring they could access treatment that might otherwise have been out of reach.

What began with just 3-4 patients during the height of the pandemic has grown into a sustained effort supporting more than 40 active patients today. In the past year alone, Steve helped coordinate 93 patient trips from Reno to San Francisco for care.

“We are helping to build the brightest and best ophthalmologists.” - Steve Laden, Lions Club member, Reno/Sparks



Steve's work reflects the power of local action within a broader network, ensuring that patients, regardless of where they live, can access the treatment they need.

Our Impact

In 2025, we gathered to celebrate the people and programs that make our work possible. From honoring the legacy of ophthalmology to marking new milestones in patient care, these moments reflected the shared commitment of our community to restoring and protecting sight.



Barkan Day 2025

A special event honoring the Barkan community and celebrating the residents, faculty, and alumni advancing ophthalmology at CPMC. Barkan Day recognizes graduating residents, highlights their research, and fosters meaningful conversation across the field.

Low Vision Center Reopening

Following a renovation and expansion, the Low Vision Center reopened its doors, enhancing our ability to help patients with vision loss maintain independence and quality of life.



Susan Day Portrait Unveiling

Supporters, colleagues, and friends gathered to celebrate Dr. Susan Day's lasting contributions to the CPMC Ophthalmology program with the unveiling of her portrait.

A Year of Community and Celebration



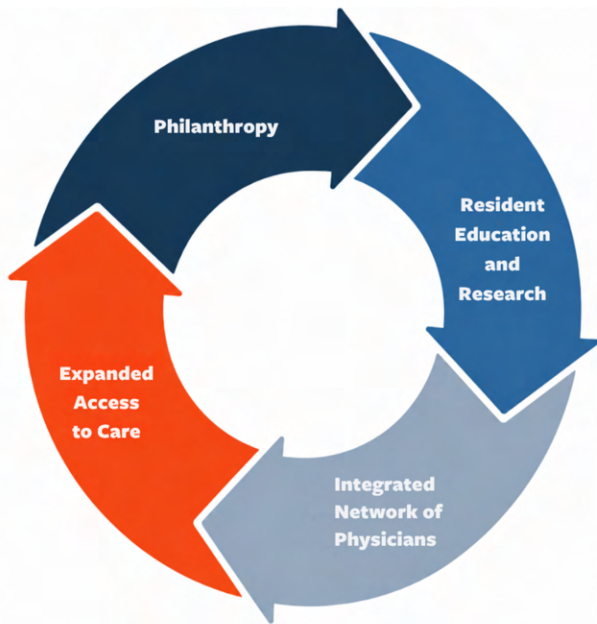
A Year of Growth and Gratitude



Why Give?

Access to sight shouldn't depend on income.

Every day, patients in our community face vision-threatening conditions, including advanced cataracts, retinal detachments, glaucoma, and traumatic eye injuries. For individuals covered by Medi-Cal or without adequate insurance, access to timely surgical care can be limited. At many providers, patients may wait up to a year for treatment, long enough for vision to worsen or become permanently lost.



Pacific Vision Foundation helps close this gap through a unique model that expands both access to care and physician training.

By supporting the CPMC Ophthalmology Residency Program and care through the CPMC Lions Eye Clinic and Pacific Vision Surgery Center, philanthropy allows residents and faculty surgeons to treat patients who might otherwise face long delays.

This partnership expands surgical capacity, provides timely sight-saving care, and gives residents the supervised experience they need to become the next generation of ophthalmologists serving communities across the country.

Your support makes this care possible.

Together, we can ensure that patients receive the treatment they need—when they need it—and that the physicians of tomorrow are trained to deliver that care for decades to come.

Join us in restoring vision and expanding access to sight-saving care.



To learn more about supporting Pacific Vision Foundation, contact Olivia Tom, Senior Development Associate (otom@pacificvisionfoundation.org)

Our Current Board of Directors

Anne Fung, MD, Chair

**Bruce Spivey, MD, Chair
Emeritus**

James Chang, Interim CEO

Lenard Weiss, Vice Chair

Wayne Costa

David Cuneo

Susan Day, MD

Kevin Denny, MD

Quinton Feltner

J. Michael Jumper, MD

Hamila Kownacki

Bernd Kutzscher, MD

Robert A. Nelson, MD, MBA

Devon Porpora

John Posey

Gaurav K. Shah, MD

Rona Silkiss, MD

Eric W. Spivey

Robert J. Webster Jr., MD

Vernon K. Wong, MD

Steven R. Young, BCO

PVF Team

James Chang

Interim Chief Executive Officer,
Chief Financial Officer

Christy Yu

Senior Accountant

Olivia Tom

Senior Development
Associate

Blanca Brosig

Program Manager

Christina Wadsworth, RN, BSN

PVSC Administrator

*Excellence in eye
care, regardless of
ability to pay.*

GIFTS \$100K AND ABOVE



Robert Wood Johnson Foundation

Howard Yeung

Roger E. Atkins Estate

GIFTS \$10K AND ABOVE

Alcon Laboratories

Charlotte P. Mastrangelo

Revocable Trust

Crankstart Foundation

Anonymous Donor

John & Cheryl Benson

David Cuneo

Annette Daroczi

Steven Fayne

David Nasaw

Joel Porter

Kathy Fields-Rayant &

Garry A. Rayant

Anne Roher

Rona Z. Silkiss &

Neil Jacobstein

Bruce & Amanda Spivey

Robert & Jeannette Webster

Sue Honig Weinstein

GIFTS \$5K AND ABOVE

Anonymous Donor
ANI Pharmaceuticals
Mallinckrodt Pharmaceuticals
Microsoft
Sharon Bystran
Kevin & Susan Denny
Quinton Feltner
Jennie Fong
Hamila Kownacki
Bernd & Marilyn Kutzscher

Richard & Tatwina Lee
Robert & Pamela Nelson
Ann Paras
Jerry & Barbara Schaufler
Kathleen Schaumberg
Bertrand Serlet & Carolyn Foss
Whitney Walker
Lenard Weiss & Meryl Brod
Steven & Renee Young

GIFTS \$1K AND ABOVE

Carl Zeiss Meditec, Inc.
Glaukos
Hwang Family Charitable Fund
Lillian Albertsen Fund
RxSight
Anonymous Donor
Richard Abbott
Helen Austin & Mitchell Kleinrock
Stanley & Jean Chang
Susan Day
David R. Demartini
Anne Fung & Jeffrey Sternberg
Cristine Gondak
Sallie Griffith
Susen Grossman
Alan & JoAnn Harley
Liz Hume & Jay Jacobs
Ron & Barbara Kaufman
David Kim

Donna Lee
Dominique Lien
Maya Ling
Deborah Matthies
Kenneth & Deborah Novack
Poorav Patel & Jothi Kanagalingam
Paul Robertson
Helen Ripple
Philip & Julie Rosenfeld
Kevin & Constance Shanahan
James & Connie Shapiro
Marcia Solomon
Robert & Naomi Stamper
Robert & Theresa Tomasello
Ann & Charles Tooth
Frank Trumbower
Dyann Tresenfeld & Ed Waldrup
Beverly Wu

GIFTS UNDER \$1K

Give Lively Foundation	Stacey Dunn-Emke	Lyudmila Lazebnaya	Patrick & Sharon Robards
LegalZoom	Joseph D. Elia	Danny Lin	Luis Rocha
Nintendo	Michael Engeldinger	Margaret Liu	Carol Ann & Nielsen Rogers
Stryker	Rose Marie Ferrante	Anne Lokke	Anne Rosenthal
Michael & Diane Abel	Daniel & Carla Flamm	Susan M. Longar	Viveka Rydell-Anderson
Sara Alexander	Harry & Donna Flynn	Robert & Anna Low	Eva B. Salonga
Glenn Allen	Gezel Frederick	Elsie Low Fong	Suketu S. Sanghvi
Ann Alton	Hollian Frederick	Kathleen Lucas	Albert Schaffer
Donna Andrews	Marcia Friedman	Bernadette Lupinetti	Stephen Schneider
Anonymous Donor	Paul Friedmann	Melanie Maier	Barbara Schoenfeld
Gary & Diana Arsham	Lori Fuchiwaki	Elliott Martin & Shayna Stein	Richard & Jennifer Schreiber
Kamran Bahadori	Paul Gamba	John Robert Martin	Stuart & Marilou Seiff
Aspen Baker	Philip & Sharon Gardner	Taliva Martin	Todd & Maria Shepler
Carole Bayer	Robert & Nancy George	Jackie Mayhew	Robert & Stephanie Sorenson
John Bell	Joan Getsinger	Mary McCann	Kurt Sweeny
Richard Bellerose &	Joann Giles & Judith Melton	Judith McCormick	Tom Swift
Roderick Hong	Virginia & Gordan Griffin	Susan McGarry	Richard Swilley
Bernard & Cynthia Benson	Charles S. Haas & B.K. Moran	Stephen Meffert & Melissa	Minako Taitani
Jill & Jonathan Bixler	Victoria & Nelden Hagbom	Kelley	M. David Their & Elizabeth
Kevin & Maria Boden	David Hall	Stephan Michels	Lewis
Carolyn Burnett	Jeffrey Halpern	Carol Michely	Colin Tom
Scott Caldwell	Karen Hart & Diane Tom	Tanya Miller	Cherie Topper
Andrew F. Calman	David Heiden	John & Sue Molinari	Kathleen Trewin
James Marvin Campbell	Elaine A. Hilp	Betsy Morris & John Helyar	Antonio Trink & Christine
Barry Capdeville	Roger C. Husted	Christie Morse	Chee
Alberta Carpenter	Ruina Judd	Frederick Narruhn	David Troup
Dikran & Christa Chamlian	Anne Kaiser & Robert Taylor	Kenneth Noyes & Alan Pardini	Carol Tufts
Alison Abbott Chassin	Alan Karras	Erin Oberly	Herb & Nancy Tully
Michael Cheung	Judith Keenan	Marie Luise Otto	David & Marcia Vastine
Carol Chiantelli	Edward Keith	Rose P.	William Viray
Ming Chin	Barry & Jackie Kerman	Jon M. Portis	Angelica Volterra
Patrick Coady	Thomas King	Carole Quan	Judith Wertheimer
August Colenbrander	William D. Kissinger	Joseph Radovsky	Diane B. Wilsey
Frank & Cheryl Davis	Harold Klingsporn	August Reader	Chris Windle
Jennifer De Niro	Mary & Walter Kowalewski	Paul Renne	Richard Wolitz
Edward & Leslie Derkum	Allan Kraemer	Sonya Richardson	Patricia Wong
Debra Dorsey	Deborah Kwan	Mary Kate Rittmann	Philip & Phyllis Ziring
Stafford Duhn			

CONTACT US



PACIFIC VISION

F O U N D A T I O N

415.393.1225

pacificvisionfoundation.org

philanthropy@pacificvisionfoundation.org

711 Van Ness Avenue,
Suite 260,
San Francisco, CA
94102

